

Updates on Assessment can be found in:

<https://miatedjosaputro.com/2021/09/01/ad3-assessment-document/>

## **1 ASSESSMENT BRIEF**

MODULE: ARCHITECTURAL DESIGN 3, NINGBO UNIVERSITY

MODULE FACILITATORS: MIA A. TEDJOSAPUTO AND FIN CHURCH

22 October 2021

This document contains overall description and relevant information of the assessments. There are three assessments in total, and it is advised to read individual assessment briefs (subsequent documents). Please note that the assessments are uniquely designed to fit to this challenging time of COVID-19 where face-to-face learning is unlikely.

The **aims and objectives** of the module which was also communicated in Week 1 are:

1. To equip students with necessary design skills
2. To promote learners' autonomy
3. To promote a critical thinking and ownership of design through an individually defined design brief
4. To guide students through the process of design by research
5. To develop presentation and communication skills

The **learning outcomes** (LOs) were communicated in Week 1, as follows. The design of assessments is hinged from the communicated LOs.

LO	Learning Outcome	Assessment Criteria	Way to accessed	Related to skills and PS- see Figure 2
1	To apply previously learned theoretical knowledge (tectonics etc) to a practical project.	<ul style="list-style-type: none"> <li>a) Work considers tectonic system</li> <li>b) Work includes materials strategies</li> <li>c) Work considers sustainability strategies</li> <li>d) Work considers urban design as part of design strategies</li> <li>e) Work includes spatial strategies</li> <li>f) Work exercises a holistic approach of designing</li> <li>g) Work defines problems of library design within its own context</li> <li>h) Work incorporates considerations from previous lectures including the guest lecture</li> </ul>	<ul style="list-style-type: none"> <li>Assessment 1</li> <li>Assessment 2</li> </ul>	S1
2	To analyse and re-evaluate design based on feedback and other peers' input	<ul style="list-style-type: none"> <li>a) Work archives weekly progress (to be submitted)</li> <li>b) Work takes into consideration other peers' input</li> <li>c) Work illustrates analysis, optimisation, or evaluation strategies</li> <li>d) Work shows a thorough design precedents analysis</li> </ul>	<ul style="list-style-type: none"> <li>Assessment 1</li> <li>Assessment 2</li> </ul>	S1 and S4
3	To evaluate design based on previously developed design parameters	<ul style="list-style-type: none"> <li>a) Work shows elaboration of individually defined design brief and objectives, and subsequently..</li> <li>b) Able to present how the brief is satisfied through the design</li> <li>c) Work demonstrates understanding of chosen site</li> <li>d) Work shows direct implementation of site analysis</li> <li>e) Work illustrates the total building area within the brief (2000-2500sqm) in an informative way</li> <li>f) Work shows understanding of local regulations and is able to present them</li> </ul>	<ul style="list-style-type: none"> <li>Assessment 1</li> <li>Assessment 2</li> </ul>	S1, S2 and S4
4	To create a final design based on iterative process of (demonstrable) improvements	<ul style="list-style-type: none"> <li>a) Work demonstrates documented workflow</li> <li>b) Work illustrates the minimum stated quantity of submissions</li> <li>c) Work includes documented physical model explorations</li> <li>d) Work includes good drawing convention in all images (north point, scale bar, etc)</li> </ul>	<ul style="list-style-type: none"> <li>Assessment 2</li> </ul>	S1, S2 and S3
5	To present the final design using taught presentation skills	<ul style="list-style-type: none"> <li>a) Final work exhibits clear design presentation (good layout, legibility, etc)</li> <li>b) Final work exhibits self-defined design brief and objectives and able to present them</li> <li>c) Final work shows the library architecture as a solution of stated problems</li> <li>d) A reflective journal to be submitted as part of final submission (assessment 3)</li> </ul>	<ul style="list-style-type: none"> <li>Assessment 2</li> <li>Assessment 3</li> </ul>	S5

Figure 1. LOs and how they are assessed

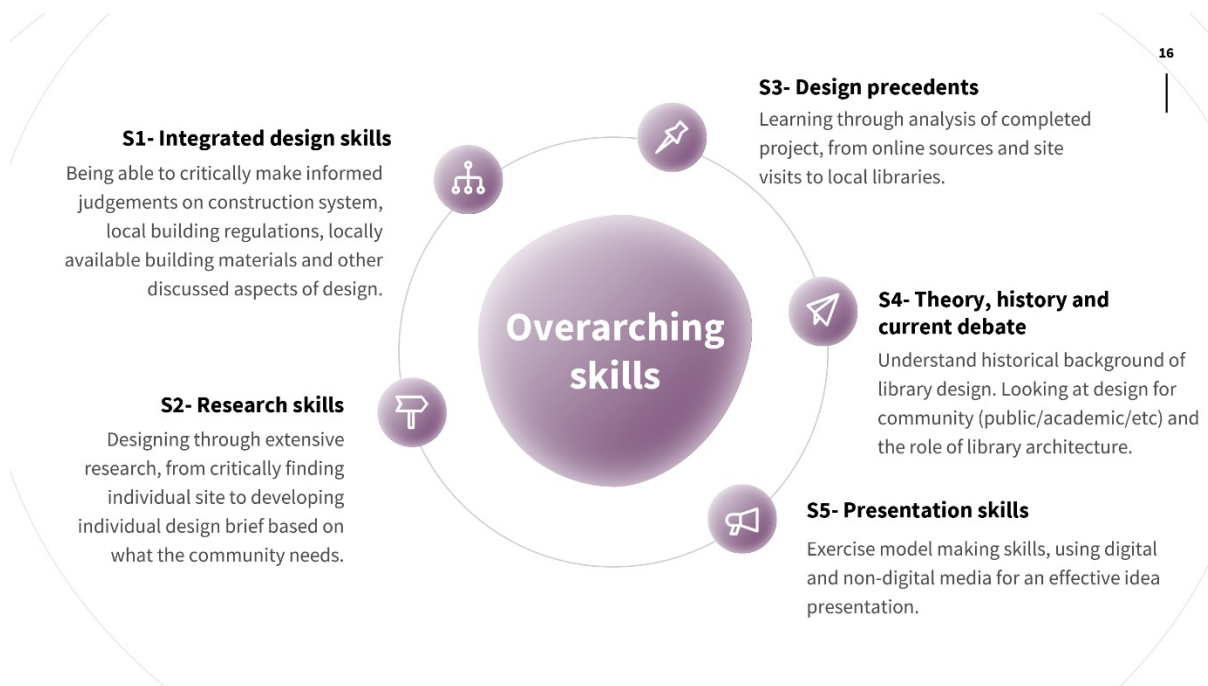


Figure 2. Overarching skills, communicated in Week 1

Assessments	Method of submission	Description	Method of assessment	Type	% of total grade	Deadline
Assessment 1	Interim Review	<ul style="list-style-type: none"> <li>Miro presentation with 15 minutes verbal presentations.</li> <li>Written peer feedback.</li> </ul>	Module facilitators assessment	Summative	20	Week 9.1
Assessment 2	Final crit	Miro presentation with 20 minutes verbal presentations.	Module facilitators assessment	Summative	40	Week 14.1
Assessment 3	Presentation Boards	<ul style="list-style-type: none"> <li>3 x A1 presentation boards</li> <li>3D virtual environment</li> </ul>	Module facilitators assessment	Summative	20	Week 16.2
Attendance counts	N/A			Formative	20	N/A

Figure 3. Assessment methods

## OUTLINE OF TASKS:

Rationale of the studio assessment tasks. The first seven weeks' learning are scaffolded by facilitators, as learners go through different weekly topics. **Assessment 1** provides a snapshot of the library design progress in Week 9. Each library design is unique as learners get to choose their own sites and construct their own design briefs (within the scope of generic brief as communicated in Week 1, such as the total building area). Assessment 1 is a platform to present: the arguments of the need to build a library in chosen site, requirements of the library based on the chosen type of library and ultimately the work-in-progress design as a provided solution.

**Assessment 2** is the final design presentation in Week 14. Learners are expected to take the feedback (from peers and facilitators) on board post-Assessment 1 and continue with the progress. All feedback from Assessment 1 onwards should be documented by learners in form of reflective journal and should be included in Assessment 3 submission. This assessment focuses on the design executions, and less focus on the presentation (polished renderings, etc which will be addressed in the next assessment). This assessment counts towards 40% of the total grade.

**Assessment 3** provides the chance to present an excellent quality of presentation, which can be used for their portfolios. The focus is an effective presentation strategy as a whole. The legibility, good layout, presentable rendering images, diagrams to illustrate ideas, etc. The format is 3 pages of A1 to be uploaded on Miro and in 3D virtual environment (such as Mozilla Hubs). It should include the journey from Week 1 (Board #1- with important analysis) and elaborations of the final design (Board #2 and Board #3).