



What we will explore in second session

CASE STUDIES 2
DISCUSSIONS 2
REFLECTIONS





Case studies 2



Parkroyal on Pickering Singapore 2013

LA Architect:
Tierra Design
Architect:
WOHA





Architect's statement

Parkroyal on Pickering
Singapore

Architect's Statement

Designed as a hotel and office in a garden, the project at Upper Pickering Street is a study of how we can not only conserve our greenery in a built-up high-rise city centre but multiply it in a manner that is architecturally striking, integrated and sustainable. Located in central Singapore, the site is at a junction between the CBD and the colorful districts of Chinatown and Clarke Quay, and faces Hong Lim Park.

A contoured podium responds to the street scale and is sculpted to form dramatic outdoor plazas, gardens and terraces which flow seamlessly into the interiors. Greenery from the park is drawn up the building in the form of lushly planted openings, crevasses, gullies and waterfalls, which also conceal above ground carparking, thus creating an attractive urban element.

Project Dates

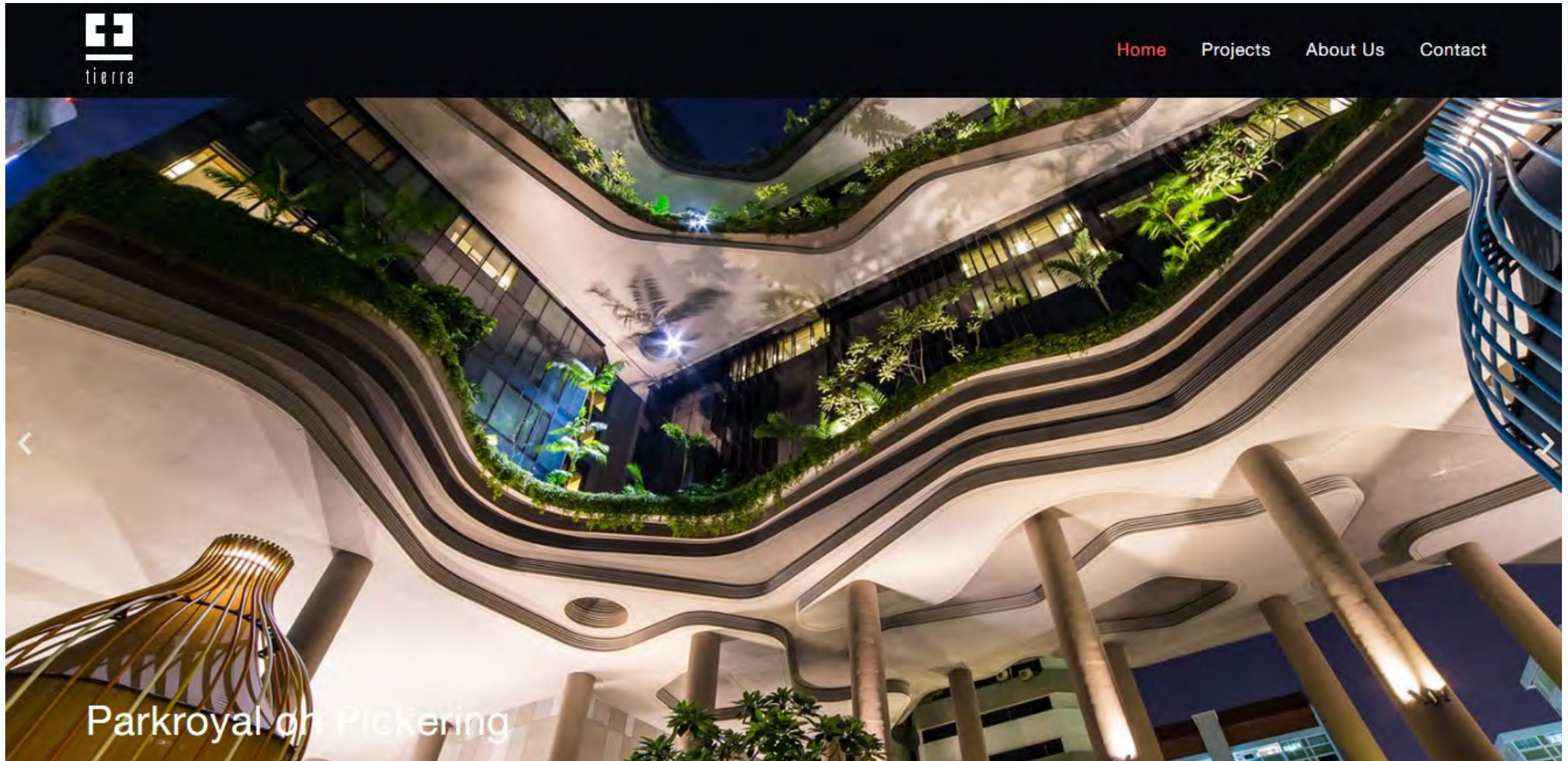
Design Inception – December 2007
Start of Construction – December 2009
Completion – January 2013

Note: I would like to share some detailed drawings but unfortunately my hard drive is inaccessible in Ningbo...





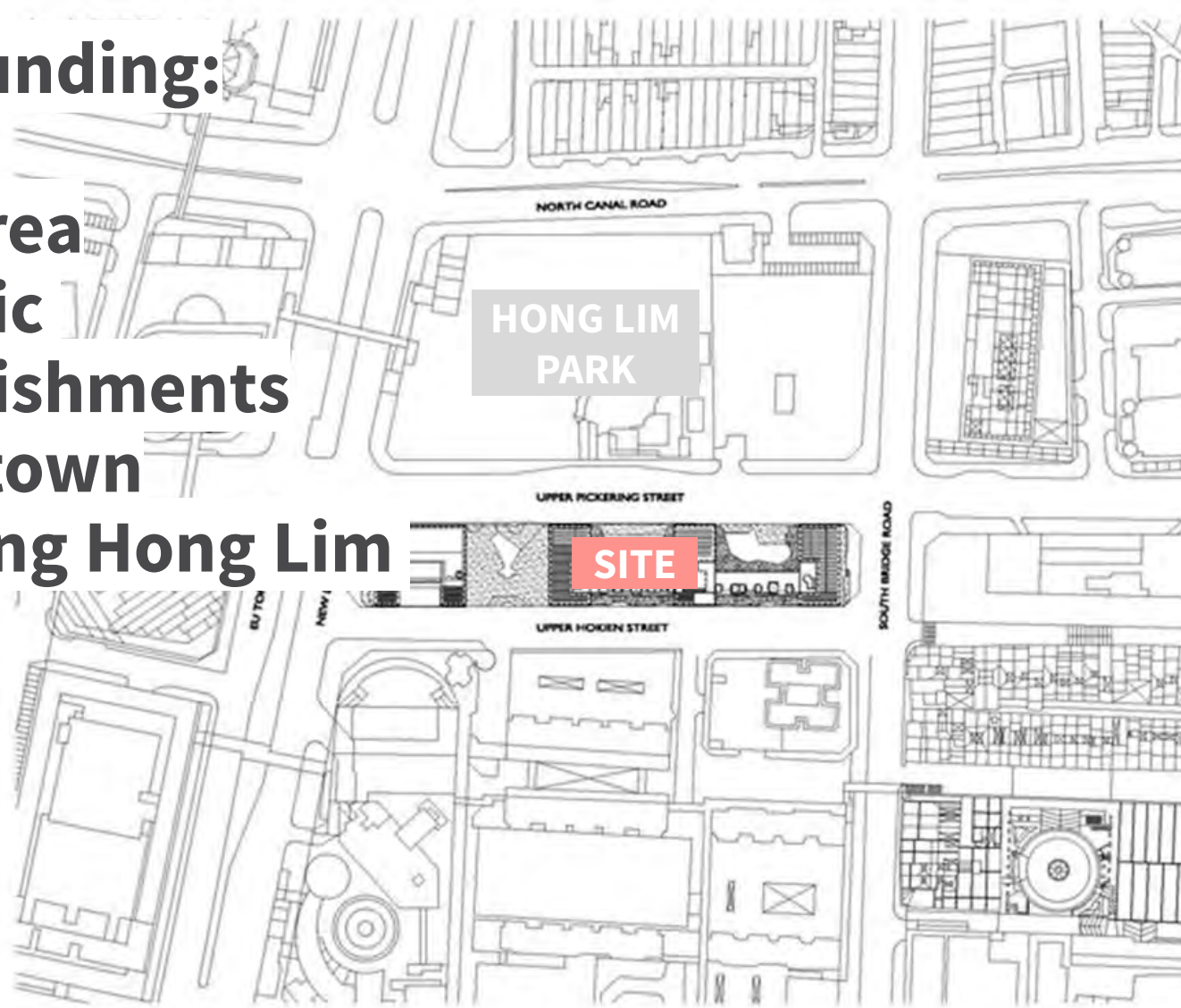
Landscape architect: Tierra Design





Surrounding:

**CBD area
Historic
establishments
Chinatown
Fronting Hong Lim
Park**



PARKROYAL ON PICKERING
SITE PLAN
0 10 20 30 40 50 60 70 80 90 100 M
1:2000 AT A3
WOHA ARCHITECTS PTE LTD
MARCH 2012





Ideation

Parkroyal on Pickering
Singapore



Left Photo by Meagan H on
Unsplash
Right Photo by hamza
bordoud on Unsplash





Parkroyal on Pickering
Singapore

Ideation:

**Geological forms such
as rocks, canyons,
caves, waterfalls and
paddy fields**

***Topographical
architecture***



Photo by Umbu Tokung on Unsplash





Important concepts exhibited in this project:

Parkroyal on Pickering
Singapore

01

Civic Generosity

Public is invited to come into the hotel. Public walkway on the ground floor.

02

Topographic Architecture

Integration of landscape and architecture. Building as a real landscape in the middle of city.

03

New Ground Level

A new datum level on the 5th floor, functioning as recreational area (swimming pool, spa, cabanas, etc). Skyparks on every 4th floor of guest room floors.

04

Green Replacement

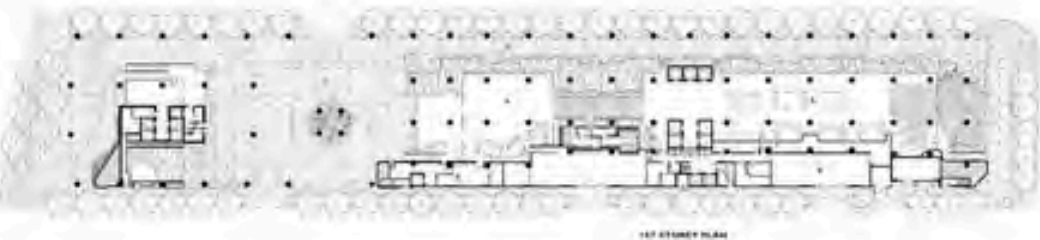
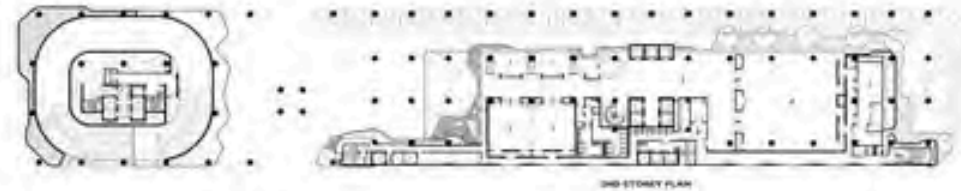
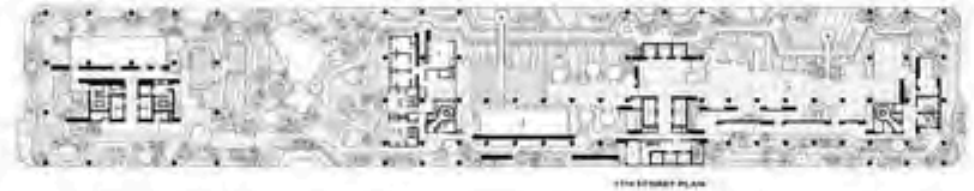
Green plot ratio is 200%





Civic Generosity

Parkroyal on Pickering Singapore



<https://www.yvonnexu.com/parkroyal-on-pickering-woha-architects-excerpts-1>





New Ground Level:

The podium level
on 5th floor,
recreational space



Parkroyal on Pickering
Singapore





Multi-dimensional greening:

42

Parkroyal on Pickering
Singapore

Consists of 52 species
of flora



Image courtesy of WOHA





Water feature

Parkroyal on Pickering
Singapore

**Dual role: Relaxing
audio visual and
maintaining ambient
temperature**



Image courtesy of WOHA





Environmental strategies

44

Parkroyal on Pickering
Singapore

Zero energy sky
gardens
Water is harvested for
irrigation
50% naturally
ventilated





Hotel guest experience

Rooms with same-level gardens

Parkroyal on Pickering
Singapore





Contoured podium

6th -16th floor

Guest rooms (with 3 tiers of sky garden).

5th floor

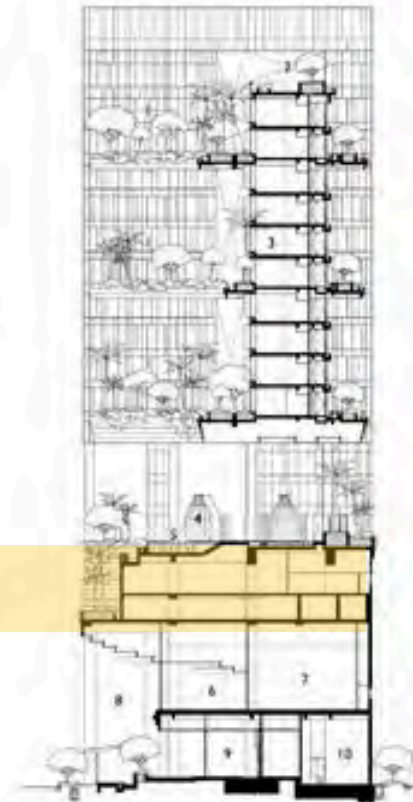
The new ground floor

3rd - 4th floor

Carpark and structure to support most of landscape

1st - 2nd floor

Public area



Parkroyal on Pickering
Singapore

PARKROYAL ON PICKERING, SINGAPORE	
LOCATION	12 UPPER PICKERING STREET
GROUND FLOOR AREA	218,307 SQM
FULLY AREA	5,958 SQM
ARCHITECT / INTERIOR DESIGN	WOHA
PROJECT TEAM	WONG KUN, SURE, RICHARD HASSALL, CHONG KUN, BOON, SHAM CHONG HOON, FRANKIE GON, TON HUI JACOB, JOHANNES LEE, ANTON LAM BONG, JANTHAWONG ROPANA, SHAUN EVELYN, JOSEPHINE TAN, GUY KAI SHAN, LUI CHU, WONG TAN TUNG, HAN, ALAN LAM, PHAM SING THONG, JOHN PAUL, R. GONZALEZ, VANDANA CHAI, RAJITHA, JIMAN, ANDREW KUNAR, ALEXANDER, HESTER, PLAZA PROPERTY DEVELOPMENT PTE LTD
CLIENT	PAA PROJECTS GROUP
DESIGN OPERATOR	TEP CONSULTANTS PTE LTD
CIVIL & STRUCTURAL ENGINEER	RECA (ARCHITECT) HOLDINGS & DESIGN ID (ARCHITECT) LTD
MECHANICAL & ELECTRICAL ENGINEER	ROGER LUTHER, ELDON, LUT
QUANTITY SURVEYOR	LUKING PUNAMER ASSOCIATES (PTE) LTD
LANDSCAPE CONSULTANT	YONG DESIGN (PTE) LTD
PAISAGE CONSULTANT	RECA (ARCHITECT) HOLDINGS & DESIGN ID (ARCHITECT) LTD
INTERIOR CONSULTANT	LIU (ARCHITECT) LTD
ACoustic CONSULTANT	COY ASSOCIATES PTE LTD
CONTRACTOR	YONG SENG CONTRACTORS (PTE) LTD

On the face of the 16-storey building, the sky gardens bridge and soften the building form, breaking down its scale and outline. The casting also allowed us to create an interesting "westboard" profile that gives texture and articulation to the contours, especially when casting shadows in the sun. Working against the concrete overhangs, which also bring to the otherwise smooth-faced building a subtle, more rugged and organic three-dimensionality so they are more in the nature of cliffs, gorges or hills.

Continuing the geological language is the podium at the base of it all. Where walls typically come straight down is a contoured plinth base made of the same precast concrete layers. Here, four to six radii or curves are combined layer by layer into strata of walls, shelves, and ground forming sculptural volumes and voids.

This presented for a cavernous entrance and drop-off point, a dramatic urban veranda, as well as plazas and gardens detailed to flow seamlessly in and out of the building. The porous podium engages the street (its height calibrated to relate to surrounding trees and shophouses), and on the upper levels the landscaping concourse openings to the aboveground carpark.



PARKROYAL ON PICKERING
UPPER PICKERING STREET, SINGAPORE



D2.1 Discuss:

How do these roles achieved in the project?

Parkroyal on Pickering
Singapore

<https://miatedjosaputro.com/2020/02/22/la-in-urban-context-d2-1/>

- ☐ Medium and means for **adapting cities to climate change**
- ☐ **Infrastructure** for supporting water resources management and stormwater treatment
- ☐ **Spaces** for various strategies:
 - ☐ **Food and energy** production
 - ☐ Protection for **biodiversity**
 - ☐ Reduction of **noise and air pollution**
 - ☐ Improving **urban microclimate** and **outdoor thermal comfort**
 - ☐ Promoting **public health**
 - ☐ Creation of **more equitable and inclusive environments** , as cities become more socially fragmented and stratified

Rinaldi Bianca, M. & Tan Puay, Y. (2019). Introduction: Landscapes and Densities. *Urban Landscapes in High-Density: Cities, Parks, Streetscapes, Ecosystems.*

