



# Gardens by the Bay Singapore 2012

LA Architect:  
Grant Associates  
Architect:  
Wilkinson Eyre



Photo by [Sergio Sala](#) on [Unsplash](#)

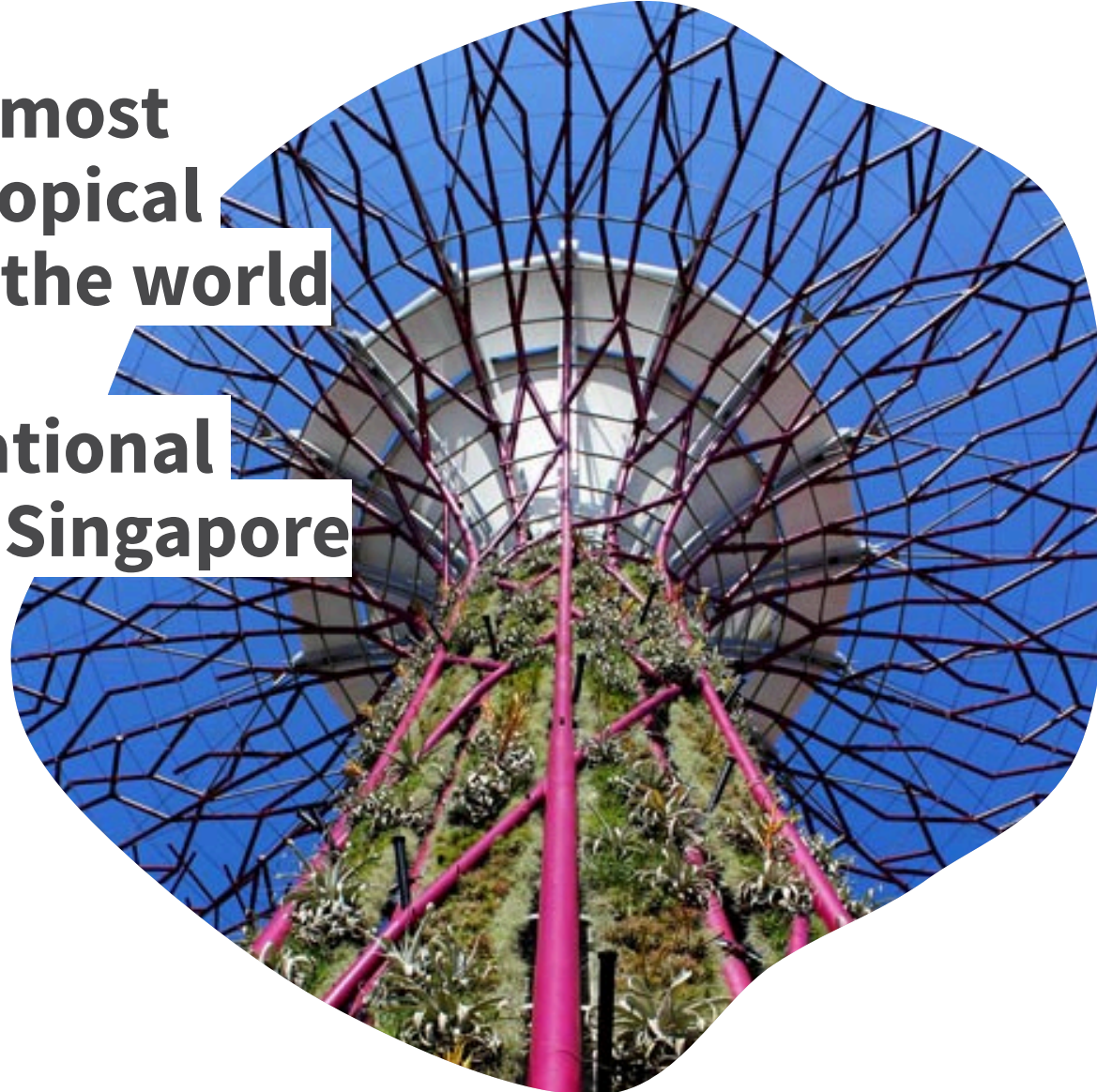




# Brief

**One of the most  
amazing tropical  
gardens in the world**

**Best recreational  
outdoor in Singapore**



Photograph by Robert Such

Gardens by The Bay  
Singapore

# Site plan

Totalling 101 hectares  
comprising of 3 gardens



<https://grant-associates.uk.com/projects/gardens-by-the-bay>





# Surrounding

**Marina Bay  
Along the promenade**

**Part of Singapore's  
“City in a Garden”  
vision**

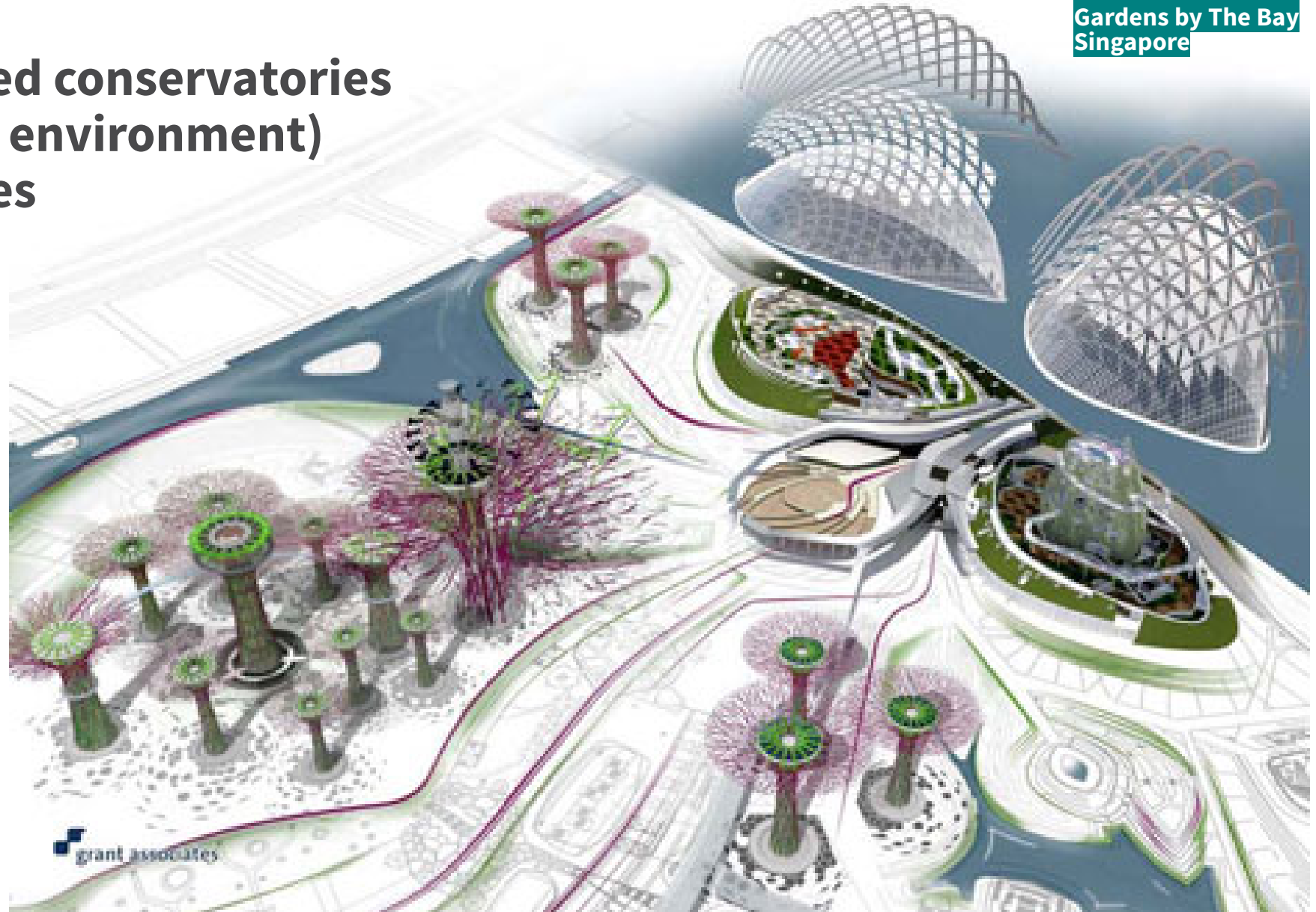






# Features of the site

**Two cooled conservatories  
(artificial environment)  
Supertrees**



Gardens by The Bay  
Singapore





# Two cooled conservatories

Creating new climate  
to suit particular  
plants

No designed paths inside  
the conservatories

Gridshell structure with  
clear internal view



Gardens by The Bay  
Singapore





# First cooled conservatory: Flower Dome

Gardens by The Bay  
Singapore

Displays plants and flowers  
from the Mediterranean-  
type climatic regions







# Second cooled conservatory: Cloud Forest

Tropical plants and  
artificial waterfall

Gardens by The Bay  
Singapore

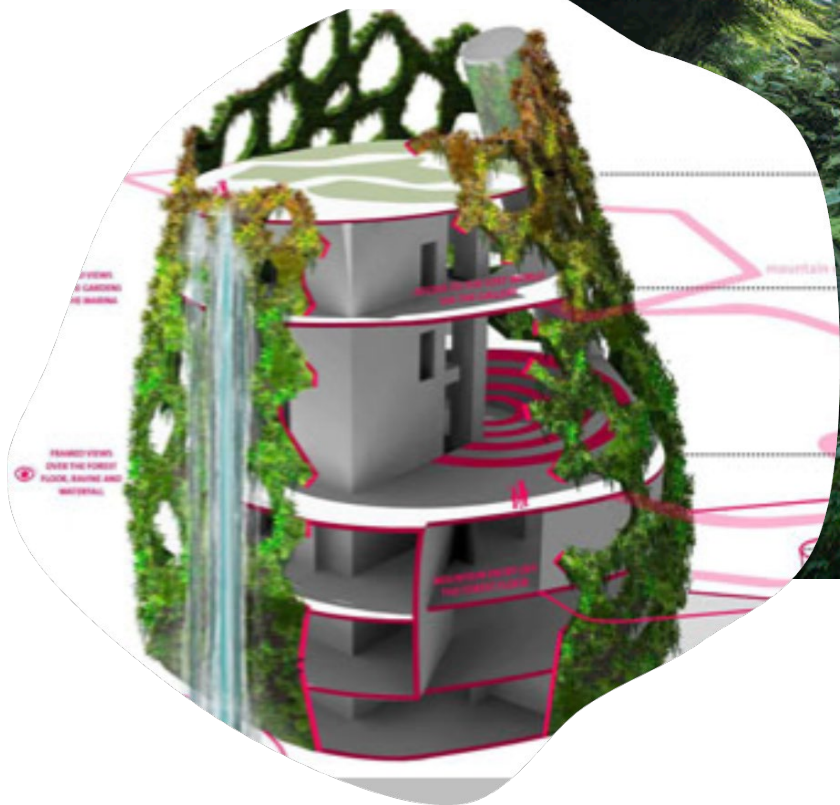






# Second cooled conservatory: Cloud Forest

Tropical plants and  
artificial waterfall



Gardens by The Bay  
Singapore





# 18 Supertree

**Brief:**  
**Counterpoint of the  
cooled observatories**

**An extraordinary  
structures supporting  
vertical tropical garden  
and embedded with  
environmental systems**



**Gardens by The Bay  
Singapore**







# Day time and night time



<https://grant-associates.uk.com/projects/gardens-by-the-bay>



# Environmental strategies

Gardens by The Bay  
Singapore

59

**Each super tree serves as  
environmental strategy:  
Rain water harvesting,  
PV, thermal panels or  
exhaust venting of the  
cooling system.**







## D2.2 Discuss:

# How do these roles achieved in the project?

Gardens by The Bay  
Singapore

<https://miatedjosaputro.com/2020/02/22/la-in-urban-context-d2-2/>

- ☐ Medium and means for **adapting cities to climate change**
- ☐ **Infrastructure** for supporting water resources management and stormwater treatment
- ☐ **Spaces** for various strategies:
  - ☐ **Food and energy** production
  - ☐ Protection for **biodiversity**
  - ☐ Reduction of **noise and air pollution**
  - ☐ Improving **urban microclimate** and **outdoor thermal comfort**
  - ☐ Promoting **public health**
  - ☐ Creation of **more equitable and inclusive environments** , as cities become more socially fragmented and stratified

Rinaldi Bianca, M. & Tan Puay, Y. (2019). Introduction: Landscapes and Densities. *Urban Landscapes in High-Density: Cities, Parks, Streetscapes, Ecosystems.*

